

EQUATOR 2009

SUZUKI RECOMMENDED MAINTENANCE SCHEDULE

99990-SEQTR-09E



Way of Life!

FACTORY RECOMMENDED MAINTENANCE SCHEDULE For Canadian Driving Conditions

The following pages include the factory recommended Maintenance Schedule for Canadian Driving Conditions. Following this schedule will ensure optimum reliability and durability of your vehicle and enhance its resale value.

For your records, your Dealer will fill in and sign the Owner Copy for each scheduled service that is performed. Your Dealer will also remove the Dealer Copy for that service. Once removed, the next scheduled service interval will appear through the window on the Maintenance Schedule cover of this booklet.

ADDITIONAL MAINTENANCE REQUIREMENTS:

Adjust valve clearance if noise increases.

In addition to scheduled maintenance, some items need to be checked during normal day to day operation. You can find these items listed in your Owner's Manual.



Next Service Interval
6,000 km or 3 Months
whichever comes first

Factory Recommended Maintenance Schedule for Canadian Driving Conditions

2009 Equator Lubrication Service

REPLACE OR CHANGE
 Engine oil & oil filter



Next Service Interval
12,000 km or 6 Months
whichever comes first

Factory Recommended Maintenance Schedule for Canadian Driving Conditions

2009 Equator Service A

INSPECT, CLEAN, ADJUST,
LUBRICATE OR REPLACE AS
NECESSARY

- Tire rotation, condition & inflation pressure
- Axle & suspension parts
- Brake pads, rotors, drums & linings
- Drive shaft boots
- Exhaust system
- Front suspension ball joints
- Propeller shaft
- Steering gear and linkage
- Steering linkage ball joints

REPLACE OR CHANGE
 Engine oil & oil filter



Next Service Interval
18,000 km or 9 Months
whichever comes first

Factory Recommended Maintenance Schedule for Canadian Driving Conditions

2009 Equator Lubrication Service

REPLACE OR CHANGE
 Engine oil & oil filter



Next Service Interval
24,000 km or 12 Months
whichever comes first

Factory Recommended Maintenance Schedule for Canadian Driving Conditions

2009 Equator Service B

INSPECT, CLEAN, ADJUST,
LUBRICATE OR REPLACE AS
NECESSARY

- Tire rotation, condition & inflation pressure
- Automatic transmission fluid
- Axle & suspension parts
- Brake lines & cables
- Brake pads, rotors, drums & linings
- Cruise control vacuum hoses
- Differential oil
- Drive shaft boots
- Exhaust system
- Front suspension ball joints
- Manual transmission oil
- Propeller shaft
- Steering gear and linkage
- Steering linkage ball joints
- Transfer case oil

REPLACE OR CHANGE
 Engine oil & oil filter
 In-cabin microfilter



Next Service Interval
30,000 km or 15 Months
whichever comes first

Factory Recommended Maintenance Schedule for Canadian Driving Conditions

2009 Equator Lubrication Service

REPLACE OR CHANGE
 Engine oil & oil filter



Next Service Interval
36,000 km or 18 Months
whichever comes first

Factory Recommended Maintenance Schedule for Canadian Driving Conditions

2009 Equator Service A

INSPECT, CLEAN, ADJUST,
LUBRICATE OR REPLACE AS
NECESSARY

- Tire rotation, condition & inflation pressure
- Axle & suspension parts
- Brake pads, rotors, drums & linings
- Drive shaft boots
- Exhaust system
- Front suspension ball joints
- Propeller shaft
- Steering gear and linkage
- Steering linkage ball joints

REPLACE OR CHANGE
 Engine oil & oil filter



Next Service Interval
42,000 km or 21 Months
whichever comes first

Factory Recommended Maintenance Schedule for Canadian Driving Conditions

2009 Equator Lubrication Service

REPLACE OR CHANGE

- Engine oil & oil filter



Next Service Interval
48,000 km or 24 Months
whichever comes first

Factory Recommended Maintenance Schedule for Canadian Driving Conditions

2009 Equator Service C

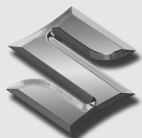
INSPECT, CLEAN, ADJUST,
LUBRICATE OR REPLACE AS
NECESSARY

- Tire rotation, condition & inflation pressure
- Automatic transmission fluid
- Axle & suspension parts
- Brake lines & cables
- Brake pads, rotors, drums & linings
- Cruise control vacuum hoses
- Differential oil
- Drive shaft boots
- Engine drive belts
- Exhaust system
- Front suspension ball joints
- Fuel lines/connections
- Fuel tank vapor vent system hoses

- Propeller shaft
- Steering gear and linkage
- Steering linkage ball joints
- Transfer case oil

REPLACE OR CHANGE

- Engine oil & oil filter
- Replace engine air filter
- Replace engine coolant
- Replace in-cabin microfilter



SUZUKI

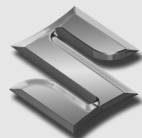
Next Service Interval
54,000 km or 27 Months
whichever comes first

Factory Recommended Maintenance Schedule for Canadian Driving Conditions

2009 Equator Lubrication Service

REPLACE OR CHANGE

- Engine oil & oil filter



SUZUKI

Next Service Interval
60,000 km or 30 Months
whichever comes first

Factory Recommended Maintenance Schedule for Canadian Driving Conditions

2009 Equator Service A

INSPECT, CLEAN, ADJUST,
LUBRICATE OR REPLACE AS
NECESSARY

- Tire rotation, condition & inflation pressure
- Axle & suspension parts
- Brake pads, rotors, drums & linings
- Drive shaft boots
- Exhaust system
- Front suspension ball joints
- Propeller shaft
- Steering gear and linkage
- Steering linkage ball joints

REPLACE OR CHANGE

- Engine oil & oil filter



Next Service Interval
66,000 km or 33 Months
whichever comes first

Factory Recommended Maintenance Schedule for Canadian Driving Conditions

2009 Equator Lubrication Service

REPLACE OR CHANGE
 Engine oil & oil filter



Next Service Interval
72,000 km or 36 Months
whichever comes first

Factory Recommended Maintenance Schedule for Canadian Driving Conditions

2009 Equator Service B

INSPECT, CLEAN, ADJUST,
LUBRICATE OR REPLACE AS
NECESSARY

- Tire rotation, condition & inflation pressure
- Automatic transmission fluid
- Axle & suspension parts
- Brake lines & cables
- Brake pads, rotors, drums & linings
- Cruise control vacuum hoses
- Differential oil
- Drive shaft boots
- Exhaust system
- Front suspension ball joints
- Manual transmission oil
- Propeller shaft
- Steering gear and linkage
- Steering linkage ball joints
- Transfer case oil

REPLACE OR CHANGE
 Engine oil & oil filter
 In-cabin microfilter



Next Service Interval
78,000 km or 39 Months
whichever comes first

Factory Recommended Maintenance Schedule for Canadian Driving Conditions

2009 Equator Lubrication Service

REPLACE OR CHANGE
 Engine oil & oil filter



Next Service Interval
84,000 km or 42 Months
whichever comes first

Factory Recommended Maintenance Schedule for Canadian Driving Conditions

2009 Equator Service A

INSPECT, CLEAN, ADJUST,
LUBRICATE OR REPLACE AS
NECESSARY

- Tire rotation, condition & inflation pressure
- Axle & suspension parts
- Brake pads, rotors, drums & linings
- Drive shaft boots
- Exhaust system
- Front suspension ball joints
- Propeller shaft
- Steering gear and linkage
- Steering linkage ball joints

REPLACE OR CHANGE
 Engine oil & oil filter



Next Service Interval
90,000 km or 45 Months
whichever comes first

Factory Recommended Maintenance Schedule for Canadian Driving Conditions

2009 Equator Lubrication Service

REPLACE OR CHANGE
 Engine oil & oil filter



Next Service Interval
96,000 km or 48 Months
whichever comes first

Factory Recommended Maintenance Schedule for Canadian Driving Conditions

2009 Equator Service C

INSPECT, CLEAN, ADJUST,
LUBRICATE OR REPLACE AS
NECESSARY

- Tire rotation, condition & inflation pressure
- Automatic transmission fluid
- Axle & suspension parts
- Brake lines & cables
- Brake pads, rotors, drums & linings
- Cruise control vacuum hoses
- Differential oil
- Drive shaft boots
- Engine drive belts
- Exhaust system
- Front suspension ball joints
- Fuel lines/connections
- Fuel tank vapor vent system hoses

- Propeller shaft
- Steering gear and linkage
- Steering linkage ball joints
- Transfer case oil

REPLACE OR CHANGE

- Engine oil & oil filter
- Replace engine air filter
- Replace engine coolant
- Replace in-cabin microfilter



Next Service Interval
102,000 km or 51 Months
whichever comes first

Factory Recommended Maintenance Schedule for Canadian Driving Conditions

2009 Equator Lubrication Service

REPLACE OR CHANGE
 Engine oil & oil filter



Next Service Interval
108,000 km or 54 Months
whichever comes first

Factory Recommended Maintenance Schedule for Canadian Driving Conditions

2009 Equator Service A

INSPECT, CLEAN, ADJUST,
LUBRICATE OR REPLACE AS
NECESSARY

- Tire rotation, condition & inflation pressure
- Axle & suspension parts
- Brake pads, rotors, drums & linings
- Drive shaft boots
- Exhaust system
- Front suspension ball joints
- Propeller shaft
- Steering gear and linkage
- Steering linkage ball joints

REPLACE OR CHANGE
 Engine oil & oil filter



Next Service Interval
114,000 km or 57 Months
whichever comes first

Factory Recommended Maintenance Schedule for Canadian Driving Conditions

2009 Equator Lubrication Service

REPLACE OR CHANGE
 Engine oil & oil filter



Next Service Interval
120,000 km or 60 Months
whichever comes first

Factory Recommended Maintenance Schedule for Canadian Driving Conditions

2009 Equator Service B

INSPECT, CLEAN, ADJUST,
LUBRICATE OR REPLACE AS
NECESSARY

- Tire rotation, condition & inflation pressure
- Automatic transmission fluid
- Axle & suspension parts
- Brake lines & cables
- Brake pads, rotors, drums & linings
- Cruise control vacuum hoses
- Differential oil
- Drive shaft boots
- Exhaust system
- Front suspension ball joints
- Manual transmission oil
- Propeller shaft
- Steering gear and linkage
- Steering linkage ball joints
- Transfer case oil

REPLACE OR CHANGE
 Engine oil & oil filter
 In-cabin microfilter



Next Service Interval
126,000 km or 63 Months
whichever comes first

Factory Recommended Maintenance Schedule for Canadian Driving Conditions

2009 Equator Lubrication Service

REPLACE OR CHANGE
 Engine oil & oil filter



Next Service Interval
132,000 km or 66 Months
whichever comes first

Factory Recommended Maintenance Schedule for Canadian Driving Conditions

2009 Equator Service A

INSPECT, CLEAN, ADJUST,
LUBRICATE OR REPLACE AS
NECESSARY

- Tire rotation, condition & inflation pressure
- Axle & suspension parts
- Brake pads, rotors, drums & linings
- Drive shaft boots
- Exhaust system
- Front suspension ball joints
- Propeller shaft
- Steering gear and linkage
- Steering linkage ball joints

REPLACE OR CHANGE
 Engine oil & oil filter



Next Service Interval
138,000 km or 69 Months
whichever comes first

Factory Recommended Maintenance Schedule for Canadian Driving Conditions

2009 Equator Lubrication Service

REPLACE OR CHANGE
 Engine oil & oil filter



Next Service Interval
144,000 km or 72 Months
whichever comes first

Factory Recommended Maintenance Schedule for Canadian Driving Conditions

2009 Equator Service C

INSPECT, CLEAN, ADJUST,
LUBRICATE OR REPLACE AS
NECESSARY

- Tire rotation, condition & inflation pressure
- Automatic transmission fluid
- Axle & suspension parts
- Brake lines & cables
- Brake pads, rotors, drums & linings
- Cruise control vacuum hoses
- Differential oil
- Drive shaft boots
- Engine drive belts
- Exhaust system
- Front suspension ball joints
- Fuel lines/connections
- Fuel tank vapor vent system hoses

- Propeller shaft
- Steering gear and linkage
- Steering linkage ball joints
- Transfer case oil

REPLACE OR CHANGE

- Engine oil & oil filter
- Replace engine air filter
- Replace engine coolant
- Replace in-cabin microfilter



Next Service Interval
150,000 km or 75 Months
whichever comes first

Factory Recommended Maintenance Schedule for Canadian Driving Conditions

2009 Equator Lubrication Service

REPLACE OR CHANGE
 Engine oil & oil filter



Next Service Interval
156,000 km or 78 Months
whichever comes first

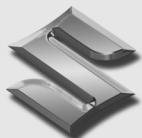
Factory Recommended Maintenance Schedule for Canadian Driving Conditions

2009 Equator Service A

INSPECT, CLEAN, ADJUST,
LUBRICATE OR REPLACE AS
NECESSARY

- Tire rotation, condition & inflation pressure
- Axle & suspension parts
- Brake pads, rotors, drums & linings
- Drive shaft boots
- Exhaust system
- Front suspension ball joints
- Propeller shaft
- Steering gear and linkage
- Steering linkage ball joints

REPLACE OR CHANGE
 Engine oil & oil filter



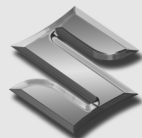
SUZUKI

Next Service Interval
162,000 km or 81 Months
whichever comes first

Factory Recommended Maintenance Schedule for Canadian Driving Conditions

2009 Equator Lubrication Service

REPLACE OR CHANGE
 Engine oil & oil filter



SUZUKI

Next Service Interval
168,000 km or 84 Months
whichever comes first

Factory Recommended Maintenance Schedule for Canadian Driving Conditions

2009 Equator Service B

INSPECT, CLEAN, ADJUST,
LUBRICATE OR REPLACE AS
NECESSARY

- Tire rotation, condition & inflation pressure
- Automatic transmission fluid
- Axle & suspension parts
- Brake lines & cables
- Brake pads, rotors, drums & linings
- Cruise control vacuum hoses
- Differential oil
- Drive shaft boots
- Exhaust system
- Front suspension ball joints
- Manual transmission oil
- Propeller shaft
- Steering gear and linkage
- Steering linkage ball joints
- Transfer case oil

REPLACE OR CHANGE
 Engine oil & oil filter
 In-cabin microfilter



Next Service Interval
174,000 km or 87 Months
whichever comes first

Factory Recommended Maintenance Schedule for Canadian Driving Conditions

2009 Equator Lubrication Service

REPLACE OR CHANGE
 Engine oil & oil filter



Next Service Interval
180,000 km or 90 Months
whichever comes first

Factory Recommended Maintenance Schedule for Canadian Driving Conditions

2009 Equator Service A

INSPECT, CLEAN, ADJUST,
LUBRICATE OR REPLACE AS
NECESSARY

- Tire rotation, condition & inflation pressure
- Axle & suspension parts
- Brake pads, rotors, drums & linings
- Drive shaft boots
- Exhaust system
- Front suspension ball joints
- Propeller shaft
- Steering gear and linkage
- Steering linkage ball joints

REPLACE OR CHANGE
 Engine oil & oil filter